



STUD EXTRACT

Commercial Vehicle Wheel Hub & Bearing Specialists

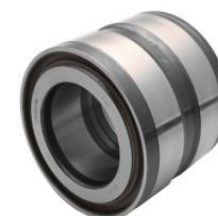


Catalogue 2014

TIMKEN
Where You Turn



JURATEK®



FAG



**2 year unlimited
mileage
manufacturer's
warranty on all Hubs
Fitted with
FAG wheel bearings***

Contents:-

Services	Page 1
DAF Product Range	Page 2-3
Volvo Product Range	Page 4-6
Scania Product Range	Page 7
Renault Product Range	Page 8

www.stud-extract.co.uk

Tel: 0161 370 3344 - Fax: 0161 371 5971 - E-mail: info@stud-extract.co.uk
Hanover Street North, Audenshaw, Manchester, M34 5HW

*subject to terms and conditions - Any O.E part numbers in this catalogue are for cross reference purposes only.



Broken Stud Removal Service

Stud extract are specialists in the removal of broken DAF brake discs or broken disc fixing bolts. Bring your hub to us and we always aim to have it ready for you in an hour. Using our specialist techniques we can remove broken bolts without the use of any heat or drilling.



Bearing Re-Sealing Service

Why replace your bearing when the only problem is a leaking oil seal. We inspect, re-seal and re-grease commercial vehicle cassette wheel bearings. All bearings we inspect and re-seal are covered by our 12 month unlimited mileage warranty*



Wheel Bearing Fitting Service

We know that fitting bearings can sometimes be a tricky job and can result in costly breakdown expenses if fitted incorrectly, so why not let one of our experienced technicians take care of it for you. Bring your hub to us and we aim to have it ready within an hour.



Brake Disc Fitting Service

Here at stud extract we offer very competitive prices on all truck, bus, coach & trailer brake discs, whatever your preference from original equipment to high quality aftermarket. We can supply your hub complete with the disc fitted helping keep your downtime to an absolute minimum.



TIMKEN
Where You Turn

JURATEK®

FAG

DAF Wheel Bearings

Our Ref	O.E Ref	Bearing Type
BRG0002	1801592	Repair Insert Unit
BRG0004	1801593	Repair Insert Unit
BRG0003	1801594	Repair Insert Unit
BRG0001	1801595	Repair Insert Unit
BRG0019	1400081	Tapered Roller Bearing
BRG0021	1400078	



We also stock bearings for other makes of Truck, Trailer, Bus & Coach. For more info contact us on:

0161 370 3344



**Front Wheel Hub Including Bearing(s)
(Disc Brakes)**

Our Ref – DAF00004

O.E Ref – 1391615

Fits to Models: - XF105 XF95 CF85 CF75 CF65 & LF55



**Front Wheel Hub Including Bearing(s)
(Disc Brakes)**

Our Ref – DAF00006

O.E Ref – 1818004

Fits to Models: - XF105 XF95 CF85 CF75 CF65 & LF55



**Rear Wheel Hub Including Bearing(s)
(Disc Brakes)**

Our Ref – DAF00005

O.E Ref – 1818003

Fits to Models: - XF105 XF95 CF85 CF75 CF65 & LF55



**Rear Wheel Hub Including Bearing(s)
(Disc Brakes)**

Our Ref – DAF00007

O.E Ref – 1812161

Fits to Models: - XF105 XF95 CF85 CF75 CF65 & LF55



**Front Wheel Hub Including Bearing(s)
(Disc Brakes)**

Our Ref – DAF00008

O.E Ref – 1407382

Fits to Models: - LF45



Front Wheel Hub Including Bearing(s) (Disc Brakes)

Our Ref – DAF00009

O.E Ref – 1812160

Fits to Models: - XF105 XF95 CF85 CF75 CF65 & LF55



Front (Re-Conditioned) Wheel Hub Including Bearing(s) - (Disc Brakes)

Our Ref – RCDAF00004

(Re-sealed Bearing Or New Bearing Available)

O.E Ref – 1391615

Fits to Models: - XF105 XF95 CF85 CF75 CF65 & LF55



Front (Re-Conditioned) Wheel Hub Including Bearing(s) - (Disc Brakes)

Our Ref – RCDAF00006

(Re-sealed Bearing Or New Bearing Available)

O.E Ref – 1818004

Fits to Models: - XF105 XF95 CF85 CF75 CF65 & LF55



Rear (Re-Conditioned) Wheel Hub Including Bearing(s) - (Disc Brakes)

Our Ref – RCDAF00005

(Re-sealed Bearing Or New Bearing Available)

O.E Ref – 1818003

Fits to Models: - XF105 XF95 CF85 CF75 CF65 & LF55



Rear (Re-Conditioned) Wheel Hub Including Bearing(s) - (Disc Brakes)

Our Ref – RCDAF00007

(Re-sealed Bearing Or New Bearing Available)

O.E Ref – 1812161

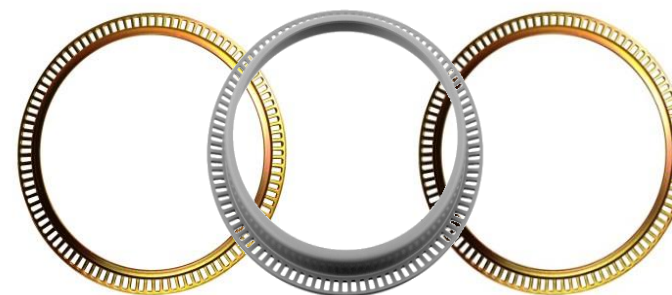
Fits to Models: - XF105 XF95 CF85 CF75 CF65 & LF55

Brake Discs

Our Ref	Make	O.E Ref
DAFBD00001	Knorr Bremse	1812563
DAF111C	Juratek	1812563
DAF105	Juratek	1408672
DAF104	Juratek	1408670

ABS Rings

Our Ref	Hub Ref	O.E Ref
ABS0001	1391615	1805821
	1818004	
ABS0002	1812160	1805822
ABS0003	1818003	1805823
ABS0004	1812161	1805824



All our re-conditioned hubs fitted with re-sealed bearings are covered by a 12 month unlimited mileage warranty.

TIMKEN
Where You Turn

JURATEK®

FAG

Volvo Wheel Bearings

Our Ref	O.E Ref	Bearing Type
BRG0005	21036050	Repair Insert Unit
BRG0006	21021391	Repair Insert Unit
BRG0007	20967830	Repair Insert Unit



We also stock bearings for other makes of Truck, Trailer, Bus & Coach. For more info contact us on:

0161 370 3344



**Rear Wheel Hub Including Bearing(s)
(Disc Brakes)**

Our Ref - VOL00010

O.E Ref - 85107753

Fits to Models: - B9R, B13R, FH & FM



**Rear Wheel Hub Including Bearing(s)
(Drum Brakes)**

Our Ref - VOL00011

O.E Ref - 20517164

Fits to Models: - FH12, FH16, FM9, FM10 & FM12



**Front Wheel Hub Including Bearing(s)
(Disc Brakes)**

Our Ref - VOL00012

O.E Ref - 85105693

Fits to Models: - FH12, FH16, FL6, FM7, FM9, FM10 & FM12



**Front Wheel Hub Including Bearing(s)
(Disc Brakes)**

Our Ref - VOL00013

O.E Ref - 85111792

Fits to Models: - FE, FH12, FH16, FM9 & FM12



**Rear Wheel Hub Including Bearing(s)
(Disc Brakes)**

Our Ref - VOL00014

O.E Ref - 85105696

Fits to Models: - B7R, B9R, B12B, B12M, FH12, FH16, FL6, FM7, FM9 & FM12



**Rear Wheel Hub Including Bearing(s)
(Drum Brakes)**

Our Ref - VOL00016

O.E Ref - 20518054

Fits to Models: - FH12, FH16, FL6, FM9 & FM12



**Front Wheel Hub Including Bearing(s)
(Drum Brakes)**

Our Ref - VOL00017

O.E Ref - 20518092

Fits to Models: - FH12, FH16, FL6, FM7, FM9,
FM10, FH12



**Rear Wheel Hub Including Bearing(s)
(Drum Brakes)**

Our Ref - VOL00018

O.E Ref - 20535244

Fits to Models: -FH12, FH16, FL6, FM9 & FM12
2008>



**Wheel Hub Including Bearing(s)
(Disc Brakes)**

Our Ref - VOL00019

O.E Ref - 85111789

Fits to Models: - FH12, FH16, FL6, FM7, FM9,
FM10, FH12



**Rear Wheel Hub Including Bearing(s)
(Drum Brakes)**

Our Ref -VOL00021

O.E Ref - 20499881

Fits to Models: - FH, FM & New 6x4 Worksite model

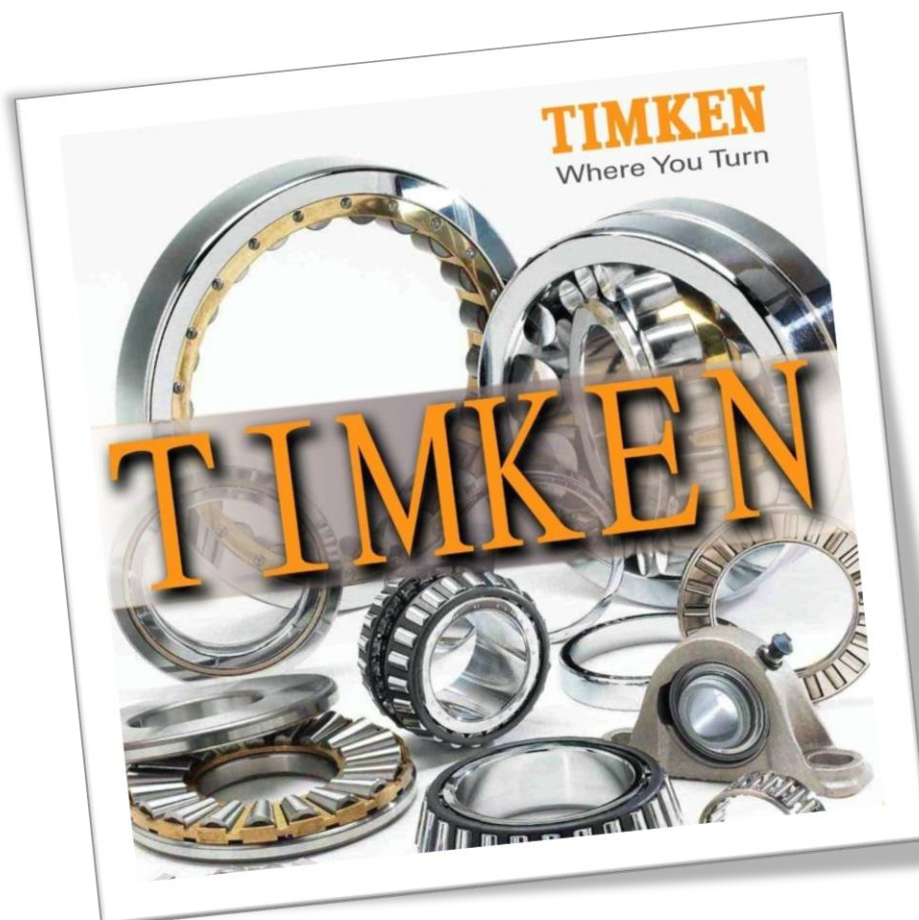
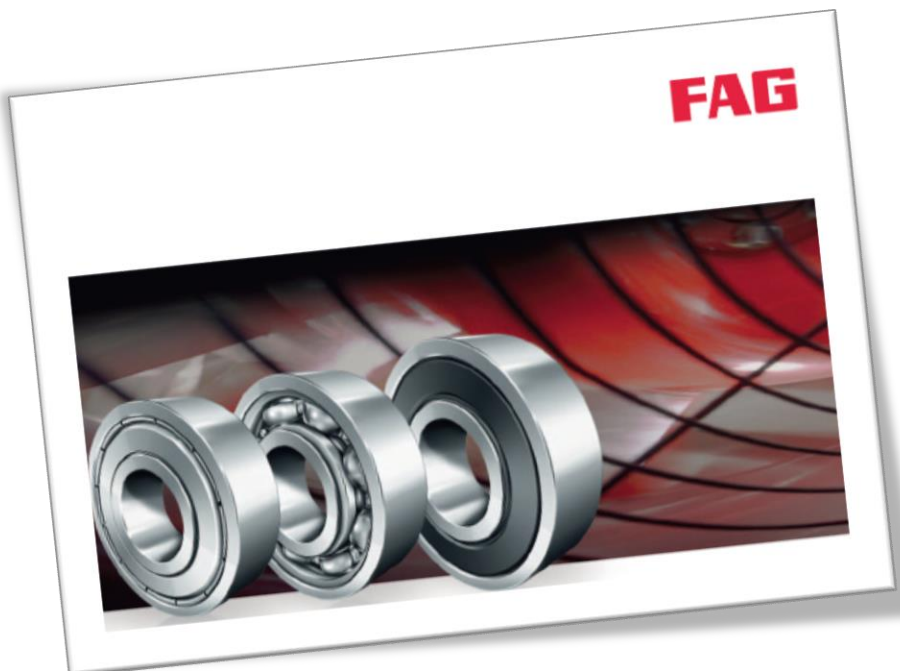
Brake Discs

Our Ref	Make	O.E Ref
VOL110	Juratek (Vented)	85103803
VOL108	Juratek (Solid)	85103803
VOL111	Juratek (Vented)	85103805
VOL109	Juratek (Solid)	85103805

ABS Rings

Our Ref	O.E Ref	Model
ABS0005	20392016	FH/FM V1 & 2
ABS0006	1075889	FH/FM V1 & 2
ABS0007	8156339	FH/FM V1 & 2
ABS0008	20424109	FH/FM V2 B6, B7, B9, B12, B13





Front Wheel Hub Including Bearing(s)
(Disc Brakes)
Our Ref - VOL00022
O.E Ref - 85111790/21024206
Fits to Models: - FH12, FH16, FM9 & FM12



Rear & Lift Wheel Hub Including Bearing(s)
(Disk Brakes)
Our Ref - VOL00009
O.E Ref - 85107752
Fits to Models: - B12M, FH12, FH16, FM9 & FM12



Front Wheel Hub Including Bearing(s)
(Disc Brakes)
Our Ref - VOL00008
O.E Ref - 85114470
Fits to Models: - B12B, B9L, B12M, B7R, B9S, B9TL, B12R, B13R, FH12 & FH16



Front Wheel Hub Including Bearing(s)
(Drum Brakes)
Our Ref - VOL00004
O.E Ref - 21024160
Fits to Models: - FH12, FH16, FL6, FM9 & FM12



Rear & Lift Wheel Hub Inc Bearing(s)
(Drum Brakes)
Our Ref - VOL00003
O.E Ref - 20820402
Fits to Models: - FH12, FH16, FM9 & FM12



**Front Wheel Hub Including Bearing(s)
(Disc Brakes)**
Our Ref - SCA00001
O.E Ref - 1868663
Fits to Models: - 4, 5, 6, P & R Series



**Rear Wheel Hub Including Bearing(s)
(Disc Brakes)**
Our Ref - SCA00002
O.E Ref - 1382884
Fits to Models: - 4, 5, 6, P & R Series



**Rear Wheel Hub Including Bearing(s)
(Disc Brakes)**
Our Ref - SCA00003
O.E Ref - 1727490
Fits to Models: - 4, 5, 6, P & R Series



**Front Wheel Hub Including Bearing(s)
(Drum Brakes)**
Our Ref - SCA00008
O.E Ref - 1724407
Fits to Models: - 4, 5, 6, P & R Series



**Rear Wheel Hub Including Bearing(s)
(Drum Brakes)**
Our Ref - SCA00009
O.E Ref - 1724788
Fits to Models: - 4, 5, 6, P & R Series

Scania Wheel Bearings

Our Ref	O.E Ref	Bearing Type
BRG0028	1868087	Sealed Insert Unit
BRG0026	1524625	Tapered Roller Bearing



We also stock bearings for other makes of
Truck, Trailer, Bus & Coach. For more info
contact us on:

0161 370 3344



Renault Wheel Bearings

Our Ref	O.E Ref	Bearing Type
BRG0005	7421036050	Repair Insert Unit
BRG0006	7420967831	Repair Insert Unit
BRG0007	7420518617	Repair Insert Unit
BRG0027	5010566154	Axle Hub Unit
BRG0018	5010439770	Axle Hub Unit



We also stock bearings for other makes of Truck, Trailer, Bus & Coach. For more info contact us on:

0161 370 3344



Wheel Hub Including Bearing(s)
(Disc Brakes)

Our Ref – REN00010

O.E Ref – 7421022433

Fits to Models: - PREMIUM



Wheel Hub Including Bearing(s)
(Disc Brakes)

Our Ref – REN00006

O.E Ref – 7420535263

Fits to Models: - PREMIUM II TR/PR/ DXi 7,
MAGNUM DXi



Front Wheel Hub Including Bearing(s)
(Disc Brakes)

Our Ref – REN00003

O.E Ref – 7420535202

Fits to Models: - MAGNUM & PREMIUM



Front Wheel Hub Including Bearing(s)
(Drum Brakes)

Our Ref – REN00002

O.E Ref – 7421024160

Fits to Models: - PREMIUM II TR, KERAX DXi

Find us on Facebook & Twitter



www.stud-extract.co.uk

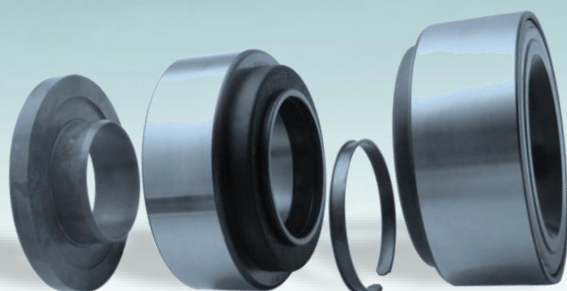




Friedrich Fischer began producing wheel bearings in 1883

Trust the ORIGINAL manufacturer

All FAG products also come with an unbiased 100,000 mile / 2 Year warranty*



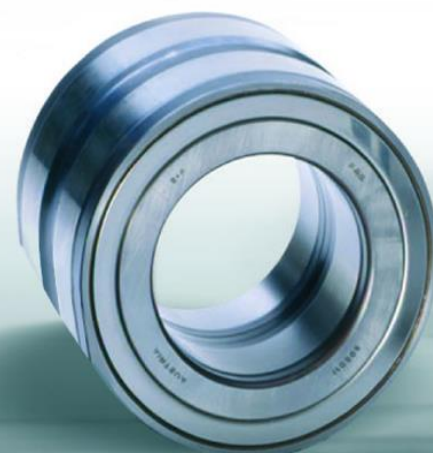
Repair Insert Unit

The RIU is a pre-assembled and lubricated sealed wheel bearing replacement solution



Insert Unit

Simple design and long faultless service life



Sealed Insert Unit

Easy and fast replacement thanks to bearing unit assembly



Tapered Roller Bearing

High load bearing capacity, compact installation space, good cornering behaviour

Axle Hub Unit

Rugged composite design, made from Cast Iron and roller bearing steel

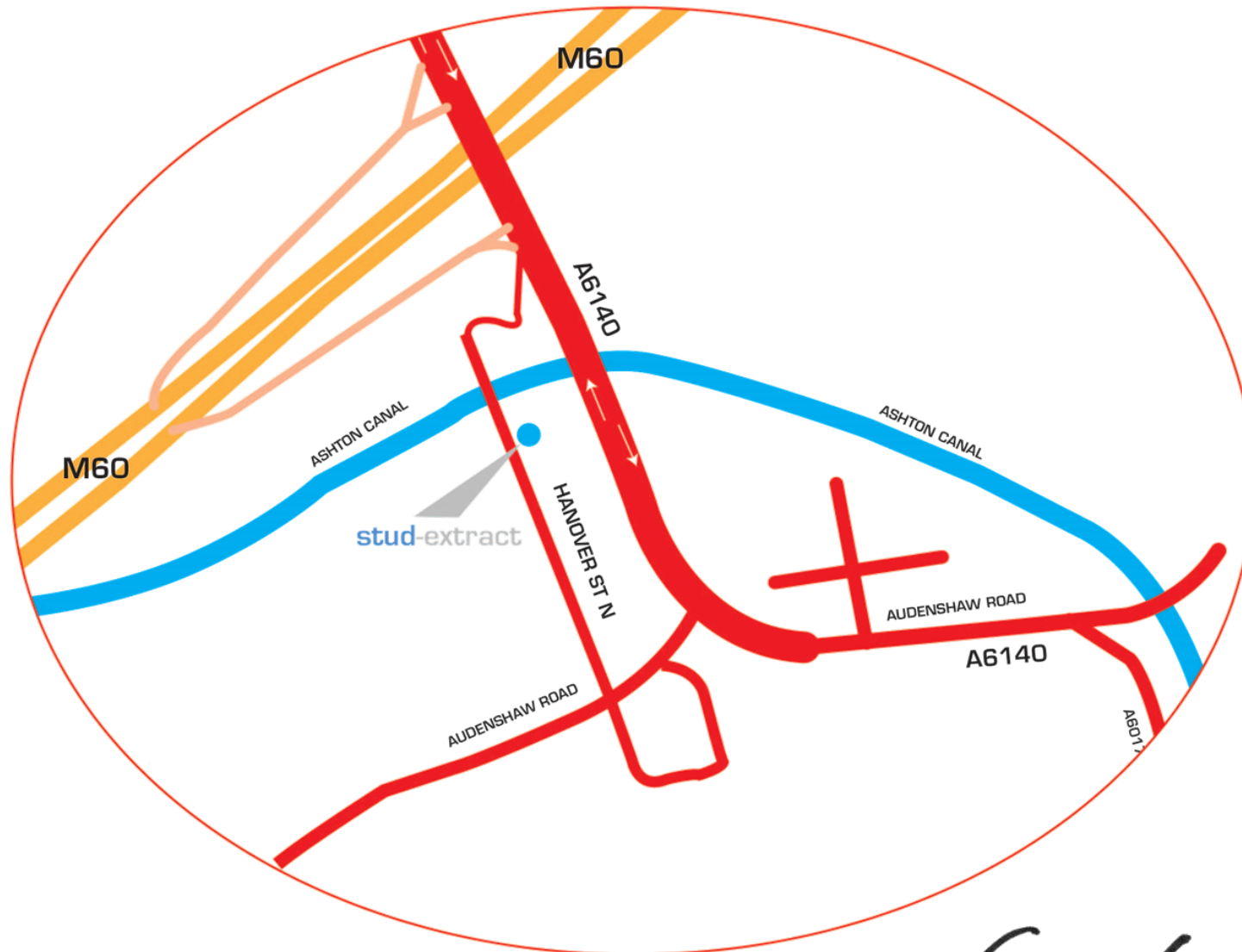
* conditions apply

Stockists of:

TIMKEN
Where You Turn

JURATEK®

FAG



Contact us



www.stud-extract.co.uk

Tel: 0161 370 3344 - Fax: 0161 371 5971 - E-mail: info@stud-extract.co.uk
Hanover Street North, Audenshaw, Manchester, M34 5HW